

**EXCLUSIVE
PRODUCT**

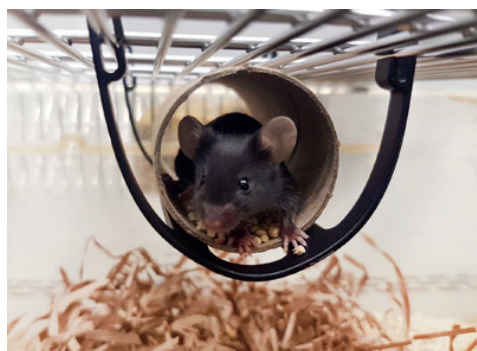


the Janet Wood
Innovation Award

In a recent study NSG mice were found to interact with the Mouse Swing for an average of 40.54% of the observed time period and showed an increase in hanging behaviour as they become used to the Mouse Swing.*

Supplied flat, Both the double and single Mouse Swing attaches quickly and easily to the bars of most cages. Suspending a Datesand play tunnel from the double Mouse Swing provides extra refuge from cage-mates or from accidental flooding.

- Creates a refuge when used with a play tunnel
- Encourages climbing and hanging
- Has an easy clip-on design
- Cost effective
- Autoclavable



Product code:
MS1-100

Available in:
Packs of 100

Specifications:
140 x 10 mm when flat - Made from Nylon



Product code:
MS2-100

Available in:
Packs of 100

Specifications:
140 x 100 mm when flat - Made from Nylon

*Lisa Doar - CRUK Manchester
The Introduction of swings and its impact on animal welfare