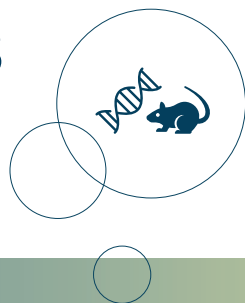


RESEARCH MODELS



NORDIC DISTRIBUTOR OF RESEARCH MODELS FROM


charles river

 The Jackson
Laboratory

SCANBUR 
Improving Life Sciences

DID YOU KNOW?

Charles River's 70+ years of animal experience has today resulted in 1 out of 2 research models produced for preclinical research globally comes from Charles River!

SCANBUR is distributor of research models from Charles River and JAX® in Denmark, Sweden, Norway & Finland. All research models are bred and maintained in accordance with the highest standards of animal health and genetic quality, including:

- **Charles River International Genetic Standardization (IGS) Program**

<https://www.criver.com/sites/default/files/resources/InternationalGeneticStandardizationIGSPProgram.pdf>

- **The Jackson Laboratory Genetic Stability Program**

<https://www.jax.org/jax-mice-and-services/find-and-order-jax-mice/why-jax-mice/patented-genetic-stability-program>

All of Charles River's European breeding facilities have achieved accreditation from the Association for the Assessment and Accreditation of Laboratory Animal Care (AAALAC) International demonstrating their dedication to responsible and humane treatment of animals in science.

Charles River & JAX® strains are available globally allowing collaborators and others worldwide to reproduce studies without compromising choice of strain. We understand the importance of supporting you with high quality animals enabling you to perform good reproducible studies. This includes optimisation of welfare and environment for research models.

JAX® MICE FROM CHARLES RIVER

Used by researchers worldwide, JAX® Mice are the most frequently cited strains in biomedical research publications supported by world-renowned scientific and technical staff.

Charles River is the only authorized commercial distributor and breeder of JAX® Mice in Europe - a product range comprising over 9,000 JAX® Mice strains and hundreds of new mouse models each year. JAX® Mice strains include commonly used inbred strains as well as thousands of specialised disease models and genetically engineered strains. Get an overview of **JAX® Mice bred in Europe** at <https://www.criver.com/microsites/jax-mice/available-models?region=3616>

WHICH ANIMAL MODEL IS FITTING FOR YOUR STUDY?

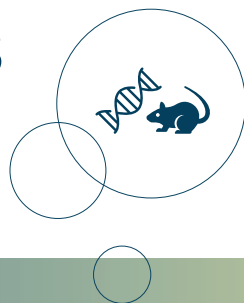
Selecting the appropriate animal model for your study is vital to the success of your research. The **Charles River Animal Model Evaluation Program** allows you to evaluate the quality and compatibility of a model before making a purchase commitment. The program can help you make the right choice whether you have a new protocol, are conducting a pilot study or exploring the opportunity to switch to a more fitting animal model.

PROGRAM BENEFITS

- Free:** Select the animal model you would like to evaluate and fill in the application at <https://www.criver.com/eval-pi-rm-animal-model-evaluation-request-form-eu>
Crate and freight charges apply.
- Reduction:** Determine whether a model fits your research up front to ensure precision in use.
- Quality assessment:** Assess the quality of Charles Rivers models in your own environment.



RESEARCH MODELS



INQUIRE & ORDER ONLINE WITH SCANBUR

For your convenience use our **online inquiry and order form** at <https://www.scanbur.com/place-order-request-quotation> to submit your inquiries and orders.

QUESTIONS? Do not hesitate to contact us:

**DENMARK,
LUND & MALMÖ**

Tel. +45 5686 5625

orders-dk@scanbur.com

SWEDEN

Tel. +46 8 594 76780

orders-se@scanbur.com

NORWAY

Tel. +45 5686 5625

orders-no@scanbur.com

FINLAND

Tel. +45 5686 5639

orders-fin@scanbur.com