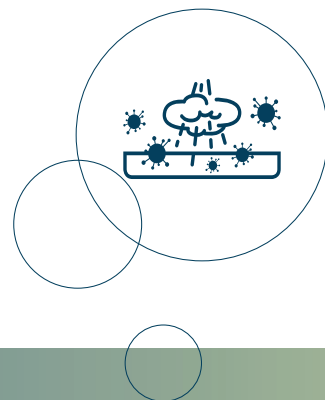


SCANFLOW

ALLERGEN CONTROL



FULL PROTECTION OF STAFF, ANIMALS & ENVIRONMENT





Animals and cage handling within a sterile area.

TRIPLE PROTECTION

- Protects staff from exposure to allergens
- Protects animals from possible contamination
- Protects the environment:
 - Eliminates spread of dust particles, allergens and pathogens to the room during animal handling and cage stacking during cage change of Scantainers or IVCs
 - Staff is not restricted by limited work space and openings
 - Prevents cage-cross-contamination
 - Scantainers with open non-filter top cages can be changed with full protection



Operator: Full protection within the entire workzone. The cabin provides spacious working conditions.

CAGE HANDLING

Cage change where all procedures are handled within a sterile area. The ScanFlow offers full protection of the animals, the clean cages and materials used during cage change. At the same time the downflow protects the operator against hazardous allergens deriving from the animals and the stacking of dirty cages. The contained area also secures, that no particles, no allergens and no pathogens can leave the cabin, i.e. it protects the environment outside the ScanFlow. As all activities take place in a sterile environment, the correct Standard Operation Procedure (SOP) is easier to maintain and it increases the safety for both animals and operators.

ERGONOMICS

Perfect working position and focus 100% on the animals. Sterility in the entire work zone allows the operator to optimise the ergonomics which reduces the risk of repetitive movement injuries. Optimised ergonomics support the correct SOP and increase safety for both operator and animal. It will also increase productivity and at the same time take care of the physics of the staff. To further improve the ergonomic situation the ScanFlow can be equipped with adjustable tables and cage dispensers, which will lift up the stack of clean cages and lower the stack of dirty cages.



Environment: The downflow and inflow ensure that no allergens nor pathogens leave the cabin (this image was taken during a smoke test).

EASY OPERATION

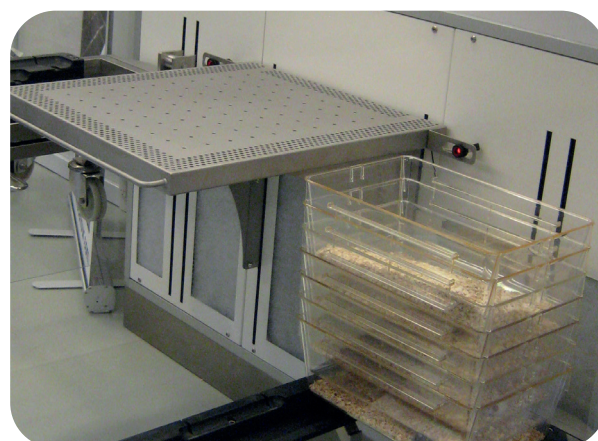
Work safely without having a long SOP. It is very easy to follow the right SOP in the ScanFlow. As long as the operator stays in the cabin, it will provide protection. With the touch panel, it is easy to choose which of the 3 standard programmes are the right working mode for you. To secure the correct downflow, the speed of the downflow is continuously being measured and adjusted. For optimal safety the ScanFlow is equipped with a specially designed laminator, which ensures extremely uniform laminar air flow.

VALIDATION

The ScanFlow has been validated on allergens and particles. The test on allergens showed that the cabin will reduce the allergen exposure by 90% and by following the right SOP, all allergens will be removed from the breathing zone. Test on particles shows clean room class 1 at the working table and in the stack of clean cages.



Touch panel in colour with integrated dispenser control. Optional: Spotlights.



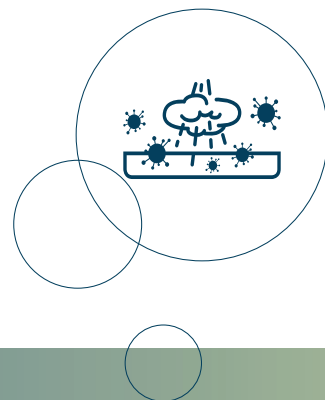
Optional: Automatic dispensers on each side of the height adjustable, perforated table.



Choose between 3 programmes.

SCANFLOW

ALLERGEN CONTROL



FEATURES

Animal welfare, disease control, allergy protection, good ergonomics, energy savings are all focus points in SCANBUR's development of equipment for the laboratory animal industry.

CONFIGURATIONS

- 9 sizes
- 3 sizes specifically designed for cage handling/emptying

OPTIONS

- Working table:
 - height adjustable/not height adjustable
 - with/without trough
 - mobile/not mobile
- Cage dispenser (for lifting/lowering of cages)
- Exhaust alarm
- Air supply from ScanFlow cabin to IVC rack
- Power outlet
- LAN connection
- Interlock for transfer ScanFlow cabin
- Curtains (strips, plates, sliding)
- External operating panel
- Laptop holder
- Spotlights
- Single control of two cabins
- Cooling
- Raised ceiling height (2200 mm)

ScanFlow can be custommade to your requirements.

For more information about **SCANBUR** products go to www.scanbur.com

info@scanbur.com