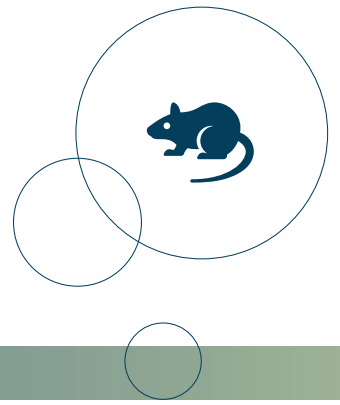


WARMING CABINET

IDEAL FOR BLOOD SAMPLING AND POST-OP CARE



WARMING CABINET

Ideal for animal blood sampling where it is important that temperature is electronically controlled. It is easier to take blood samples if the body temperature has been raised, and the animals are less exposed to stress and discomfort. Also ideal for post-operative care of anaesthetized animals, where it is important to keep them warm after operation.

STABLE TEMPERATURE

To maintain a stable temperature the cabinets are adjusted by means of a unit, which continuously calculates the amount of heat required at any time (PID adjustment). This is how we minimise temperature fluctuations caused when opening cabinet doors.

Main design priority has been to maintain long-term temperature stability as close to the pre-set temperature as possible. During periods where the doors remain closed, the temperature is stable within $\pm 0.1^{\circ}\text{C}$. Temperature can be set between room temperature and 40°C . The cabinet is equipped with visual and audible alarm.

The cabinet is well insulated and the inner parts of the cabinet (shelves, cages, etc.) also help to maintain a stable temperature. Before use it is necessary to preheat the cabinet. Heating it from room temperature to a stable 36°C takes approx. 30 minutes.

MATERIALS

Anodized aluminium profiles. Sides/bottom insulated and covered with an easy-to-clean anodized aluminium surface. 4 wheels and doors in transparent acrylic plastic.

WASHING AND CLEANING

Clean with damp cloth and mild disinfectant agent.

TECHNICAL SPECIFICATIONS

Power supply: 230 Volt, 600 VA, 50/60 Hz.

Equipped with a central fan in the top of the cabinet. The recirculated air is filtered through a filter (efficiency $> 98.5\%$ of particles $> 0,3 \mu\text{m}$).

QUALITY ASSURANCE

Each warming cabinet is tested and delivered with a certificate.



48-VS-IV-H



48-VS-IV



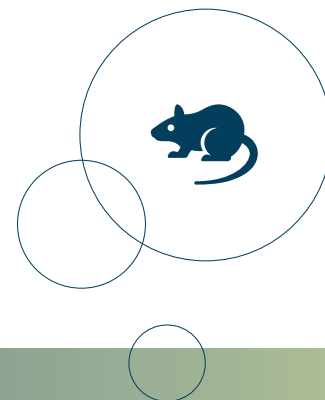
48-VS-III

DESIGNED FOR BLOOD SAMPLING AND POST-OP CARE



WARMING CABINET

IDEAL FOR BLOOD SAMPLING
AND POST-OP CARE



SPECIFICATION

PRODUCT CODE	48-VS-IV	48-VS-IV-H	48-VS-III
Dimensions (ext.) (mm):			
Width	1030	1030	730
Depth	800	800	625
Height	960	1230	750
Dimensions (int.) (mm):			
Width	870	870	680
Depth	670	670	470
Height	570	570	470

CAGE CAPACITY			
The shelves are equipped with guides; the shelves act as cage lid. Recommended during e.g. blood sampling.			
Delivered incl. cages (standard):			
Type 1354G (IV)	4	4	-
Type 1290D (III)	-	-	4
The shelves act as conventional shelves and other types of cages can be used, e.g. during post-operative care.			
Type 2000P	4	4	1
Type 1500U	4	4	2
Type 1291H (III-H)	6	6	2
Type 1290D (III)	6	6	2
Type 1284L (II-L)	8	8	5
Type 1264C (II)	16	16	5
Type 1145T	10	10	6

FEATURES			
Number of doors	4	4	2
Number of suspension guides	4	4	4

OPTIONS			
Fold-down table	✓	✓	-
Transport handle	✓	✓	-
Removable cage insert	✓	✓	✓
Power outlet socket	✓	✓	-

For more information about **SCANBUR** products go to www.scanbur.com

info@scanbur.com